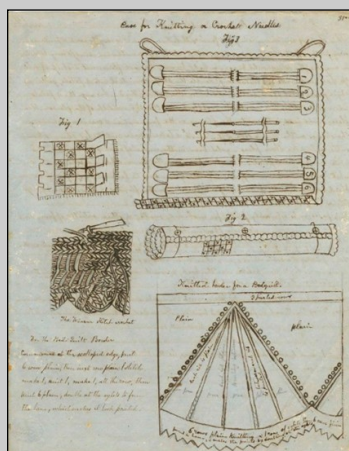


ECHOES



The
Escambia
County
Historical
Society,
Founded
1971

**The June Meeting Scheduled for
Tuesday, June 23, 2020
Has Been Canceled.
The Brewton Campus of the
Alabama Coastal Community College
Is Closed Until Fall.
Thus the McMillan Museum and
Alabama Room Are Closed.**



Although the McMillan Museum and the Alabama Room are closed until the fall, you can contact Don Sales, Museum Director, to have the Museum open to you by appointment. Contact information is:
P.O. Box 276
Brewton, AL 36427
Phone: 251-809-1528
E-mail: escambiahistoricalociety@gmail.com

This illustration, to the left, on how to make masks is a page from an illustrated book of instructions for sewing techniques and fabric care from the 1860's. From the Alabama Department of Archives and History, Facebook.

Table of Contents

A Gallery of Significant People from Escambia County	2
Our Business Members	3

In March 1902 the **Selma to Flomaton** branch of the Louisville and Nashville **Railroad** was completed and **opened** for public service. Mushroom towns sprang up all along the line, each with the dream of becoming a prosperous **railroad** city.

Some of these towns would be Wallace, Repton, Beatrice, Pine Apple. Can anyone name other towns along this line?



Former L&N Depot
Thomaston, Alabama

Volume 47 No. 6
June 2020



This vintage picture shows football fans wearing masks during a Georgia Tech game in Atlanta in the 1918 Spanish Flu pandemic.

In Fall 1918, media reports provided daily updates on mortality rates of a pandemic. Schools, churches and other places of public gathering were closed. Volunteers assembled to make hundreds of masks. Businesses impacted by shutdowns waited eagerly for health officials to signal a return to life as usual.

From <<https://www.ajc.com/sports/college/captivating-photo-georgia-tech-from-1918-and-the-story-behind/XOUkYT9o82wGyHDyP27XVL/>>.

Gallery of Significant People from Escambia County

Marva Collins



**Atmore
(Renown
Educator)
(1936- 2015)**

Marva Collins became one of the most influential teachers and education activists of the 20th century. Born in Monroeville, Alabama in 1936, Collins grew up and attended school in Atmore. She was more than familiar with the educational inadequacies associated with black schools during this era of segregation, but she became passionate about learning and always strived for excellence.

After finishing high school at Atmore, Collins attended Clark College in Atlanta and after graduation, returned to Alabama where she taught for two years. After that, she moved to Chicago where she taught in the public school system for 14 years.

Frustrated by the Chicago school's low standards, Collins decided to open her own school, the Westside Preparatory School, in 1975 on the second floor of her home. She applied a unique approach to teaching which exposed students to subjects that most educators considered well beyond their capabilities. This became known as the "Collins Method." Many of her students had been considered learning-disabled by the public school system, but at the end of the first year, every student scored at least five grades higher on their standardized tests. Her enrollments grew and the academic successes continued.

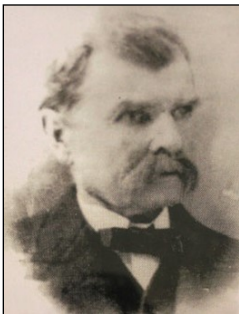
Soon, Marva Collins' success attracted national attention. She and the Westside Preparatory School were profiled by *60 Minutes*, *Good Morning America*, *Time* and *Newsweek* magazines, and was the subject of a television movie, *The Marva Collins Story*. President Reagan offered her the post of Secretary of Education, which she declined in order to continue the development of her school.

Marva Collins Preparatory Schools were opened in Wisconsin, Ohio, and Florida and were soon training over 1,000 teachers a year. Collins traveled to Africa with the Young Presidents Organization in order to spread her methodology to educators worldwide.

Marva Collins has received more than forty honorary degrees and in 1982 was honored as one of the Legendary Women of the World.

Marva Collins passed away in 2015.

Norvelle R. Leigh



**Brewton
(Businessman
-Community
Leader)
(1836-1921)**

Norvelle Leigh was born on May 31, 1836 near Brooklyn, Alabama. He grew up on a small farm with little formal education. At age 15, he went into the mercantile business and later moved to Milton, Florida where he operated his own store. When the Civil War began, he enlisted in the Confederate Calvary where he had a distinguished record advancing to the rank of captain.

After the war, Leigh came to Pollard where he operated a very successful mercantile and lumber business. He studied law in his spare time and was soon able to pass the bar exam. In 1880, he was elected Probate Judge of Escambia County, being reelected for five terms and serving for over 24 years.

Leigh established a plantation in the Alco area and soon became highly influential in the early development of Brewton. He led the effort to have the city of Brewton incorporated in 1885 and his name appears prominently in much of the historical records of the time.

Leigh's descendants became associated with many of the prominent families of the Brewton area. His daughter, Kate, was the wife of Sheriff Edward S. McMillan.

Norvelle R. Leigh passed away in 1921.

(Continued on page 3)

Gallery of Significant People from Escambia County

(Continued from page 2)

Patricia McKenzie



**Atmore
(Businesswoman-
Mayor)
(1917-1986)**

This series of biographies created by Charlie Ware for ECHS is part of the society's commemoration of Alabama's Bicentennial.

Patricia Patterson McKenzie made history in Atmore, Alabama when she became the first female mayor of that city. After serving four years on the Atmore City Council, she was elected mayor in 1976, winning by the largest margin of any mayor in Escambia County history.

McKenzie was re-elected in 1980 and 1984. During this time she served as a director with the Alabama League of Municipalities and on the board of several other state organizations. She passed away in 1986 in the midst of her third term.

During McKenzie's tenure as mayor, Atmore saw vast improvements to its Industrial Park and a record growth in new industries. The city also experienced construction of many new facilities and improvements of city properties.

McKenzie's parents were noted Atmore leader H.H. Patterson and Alexandra de Palkowski. She grew up in Atmore but graduated from Murphy High School in Mobile. Later she obtained degrees from Sweet Briar College and the University of Alabama.

After college, McKenzie returned to Atmore where she became very successful in a variety of businesses. She became the first woman appointed to the Board of Directors at the First National Bank of Atmore and, for many years, was a board member of the Atmore Area Chamber of Commerce.

McKenzie was always very active in community service. In addition to being a member of many boards and committees, she was an officer in the PTA, the Red Cross, the Pilot Club, the March of Dimes, the United Fund, and the Atmore Junior Service League. She was recognized several times as the Citizen of the Year by the Atmore Chamber of Commerce and in 1984, received the Outstanding Community Leadership Award from the Alabama Cooperative Extension Service.

After McKenzie's death in 1986, Alabama Senator Howell Heflin said of her: "She was a lovely and gracious lady and an effective, efficient government official. She was one of the finest city officials of our state and she will be sincerely and truly missed by many people, including the people of Atmore and far beyond Atmore."

Our Business Members

**Remember to
Support our
Business Members**

www.LandscapesAre.Us office@LandscapesAre.Us

Quality
Landscapes
& Irrigation

251.867.3177

1705 Old Castleberry Road Brewton, AL 36426

THE L HOUSE
PROFESSIONAL PHOTOGRAPHY
INVITATIONS, PRINTING & CUSTOM FRAMING

Clay
Lisenby
Owner

(251) 867-9962
716 Douglas Avenue
Brewton, Alabama 36426
Lhousephotography@gmail.com
www.theLhousephoto.com

ECHOES
THE NEWSLETTER FOR
THE ESCAMBIA COUNTY
HISTORICAL SOCIETY

P.O. Box 276
Brewton, AL 36427
Phone: 251-809-1528
E-mail: escambiahistoricalociety@gmail.com

We're on the web!
www.escohis.org

FIRST CLASS MAIL
DATED MATERIAL
Address correction
requested

"Donations and contributions that are not for books or membership dues may now be made online through PayPal to [<escambiahistoricalociety@gmail.com>](mailto:escambiahistoricalociety@gmail.com). Please continue to use the form shown for book requests and membership dues, by mail, as your complete name and address are needed for our records. Thank you again for your support!"

Books Available by Contribution

	Regular	Mailed
Headstones and Heritage	\$20.00	\$25.00
Escambia Historical Society Cookbook	\$10.00	\$15.00
Wildflowers of The Conecuh/Escambia River Basin CD	\$10.00	\$15.00
History of Brewton and E. Brewton (sc)	\$35.00	\$40.00
Flomaton Centennial Scrapbook	\$30.00	\$25.00
Addendum to Headstones and Heritage	\$20.00	\$25.00
Headstones & Addendum Together	\$40.00	\$50.00

**Clip the following form and send to ECHS
Treasurer, P.O. Box 276, Brewton, AL 36427**

Date ____/____/____

Name _____

Address _____

Phone _____

Email Address _____

**Do you prefer to get your newsletter by
U.S. Mail ____ or email? ____**

Dues

(\$25.00/person; \$35.00/ family at same address; Lifetime, \$500.00/person; \$100.00/year business)

Dues _____
Donation _____
Total Enclosed _____

Your Interests _____

You Will Help With _____

Dues are to be paid at the beginning of the year

Many members give a membership as a gift!

**Business members get a large scale
advertisement 11 months of the year.**

ECHOES, The newsletter for the Escambia County Historical Society, a 501 (c) (3) corporation, is published monthly except November. Comments are welcome. You may email the Society at escambiahistoricalociety@gmail.com or call 251-809-1528.

OFFICERS

President, *Don Sales*
Vice-President, *Charlie Ware*
Secretary, *Jacque Stone*
Treasurer, *John Angel*
Echoes Editor, *Ranella Merritt*
Librarian, *Open*
Publicity, *Clay Lisenby and
Stephen Salter*
Historian/Curator, *Tom McMillan*

Trustees

Ann Biggs-Williams
Ranella Merritt
Tom McMillan
Sally Finlay
Charles Ware, Alternate
Darryl Searcy, Trustee Retired